

*"No problem can be solved from the same level of consciousness that created it."
...Albert Einstein*

TOGETHER WE ARE BETTER
WWAGLOBAL

Residential Summit
March 18-24, 2021

WOMEN

*The Awakened
Lioness Rises as the
champion of ALL
Humanity!*

WELLNESS

*The Gift of Birthing
and Cycles through
honoring and
Awareness!*

AWAKENINGS

*The moment of
saying YES
to the Bounty-full
energy that Arises as
our UNIFIED
presence of
Masculine and
Feminine Balance.*

WHO WE ARE

WWAGLOBAL is a Movement and community of individuals from around the world, celebrating the expansion and evolution of Our Collective Consciousness, Diversity, and the Divine Feminine that is Rising NOW on the planet and within ALL.

The WWAGlobal Summit is a promise kept to come together as One Heart. Yes! Our voices are different!
AND it is in the diversity of our collective experience where our greatest beauty lies because...
Together We Are Better!

JOIN US!

You can participate In-person or On-line.

In person attendees enjoy the Healing Frequencies of TOSA Blue Mountain Sanctuary and can extend their visit to participate in a variety of personal wellness activities.

WHAT

A summit of Unified Presence. TOGETHER we are remembering our ONENESS with indigenous caretakers of the planet and her vast legacy. In ONENESS we stand together with the ascended realms of presence.

WHY

Because taking care of our planet, our shared humanity, and our unified consciousness is the right thing to do!
"No problem can be solved from the same level of consciousness that created it." -Albert Einstein

WHEN

Together We Are Better
WWAGlobal Summit Kicks Off:

March 19-21, 2021

Plus In-Depth Workshops
March 22-24

WHERE

This Powerful Event will be hosted live from **TOSA Blue Mountain** in Ecuador located in the heart of the Andes Mountains



What is WWA?

Women! Wellness! Awakenings!

WOMEN: The Empowered Divine Feminine within ALL

The Divine Feminine is an aspect within each of us. an invitation to come into greater balance and harmony with our awakened empowered lioness energy.

Every being, beyond gender, orientation, or felt sense of self, carries this aspect. The moment to stand in our power and expand the Divine Feminine energy into our lives, families, communities, planet & universe.

WELLNESS: The Authenticity Code

Wellness is the intersection between your passion, purpose and power. The active experience to Live in the Now, free from past traumas and hurts interfering with your Confidence and Joy.

Wellness is Sacred Union with All aspects of your being; Body, Mind, Spirit and Guidance.

What if "limitation" was dropped from your vocabulary and your life? Time to claim the balance of higher consciousness!

Awakenings: The YES Moment that Ignites your Mastery Abundance as the Law of Instantaneous Manifestation!

Awakening is the Divine Awareness of your Mastery Presence!

The Experience of this life of co-creation as the joy-filled spontaneous embrace of unconditional love and compassion. Arising each morning inspired and filled with the joy of honestly knowing who you are and why you are here!

Knowing without doubt that you are where you need to be, doing exactly what you are meant to be doing, and loving all of it! Your Awakened Presence is abundant, youth-full and fervently aligned with the reason your soul said YES and took birth...HERE...now!

You are Ready to ignite your dormant gifts and to Call Forward the True Power of your Divine Nature!

More than ever this is the moment to fully Trust and align with your intuitive nature!

To Trust that abundance is yours and all you need will flow to you as you once more REMEMBER and EMPOWER your Alchemical Mastery creation energy as the Law Of Instantaneous Manifestation!



**IMAGINE COLLECTIVELY AWARE CONSCIOUSNESS
BRIGHTLY ILLUMINATING THE UNDENIABLE MOMENT OF UNITY.**

Ready to Enter The Dome of Oneness?

TOGETHER WE ARE BETTER!

WWAGlobal.com The ROAR is NOW!

Welcome Home You have found your tribe!

The Sacred Dome of Creation and Balance

will be at the heart of all WWA Global Equinox Summit and all future events Summits and TOSA events. This dome will be a structure that connects all who enter to our nourishment of our beautiful planet with the expanded consciousness of ascended presence.

The Canari will be blessing the entire process of the creation of this dome through sacred ceremony.

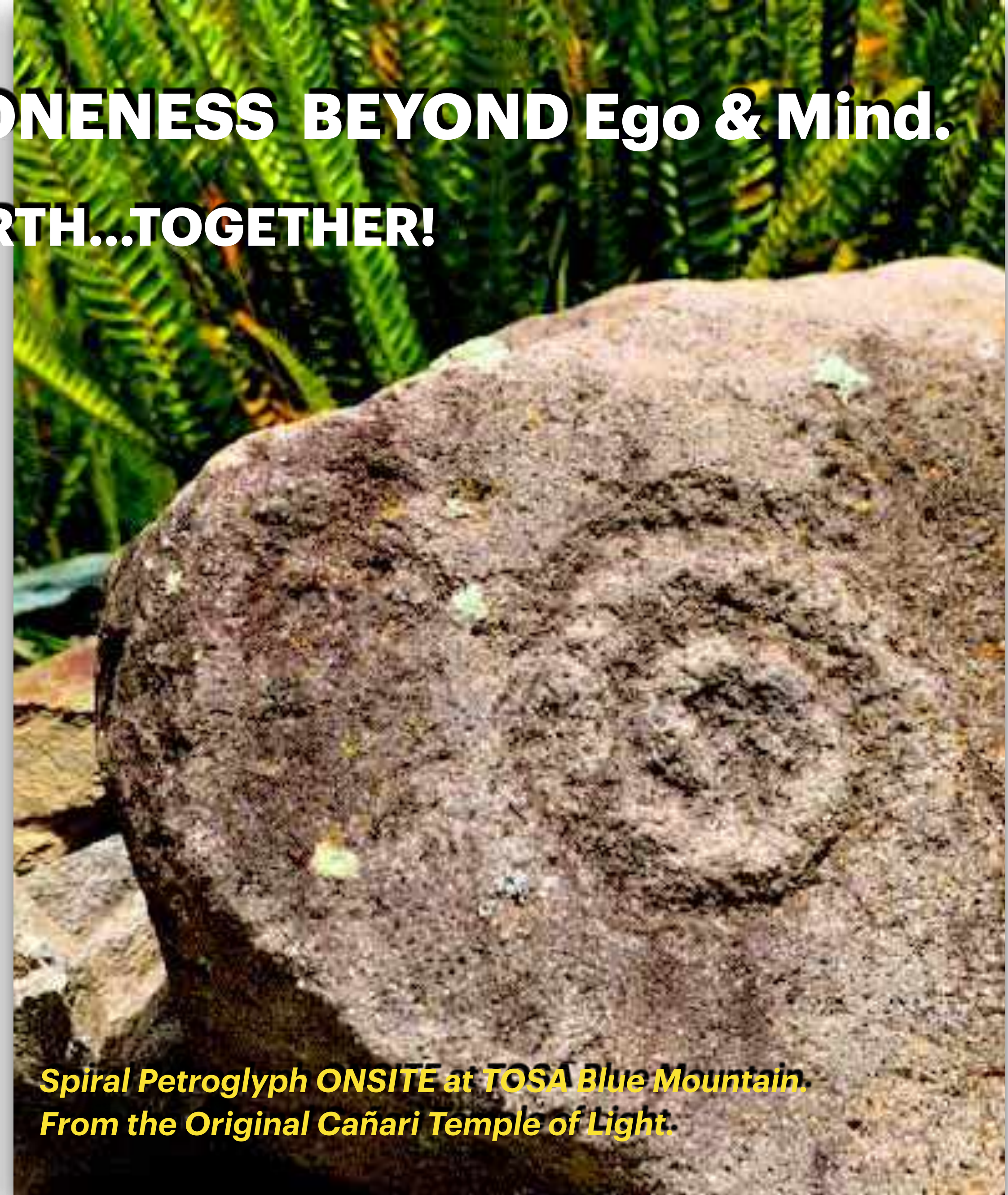
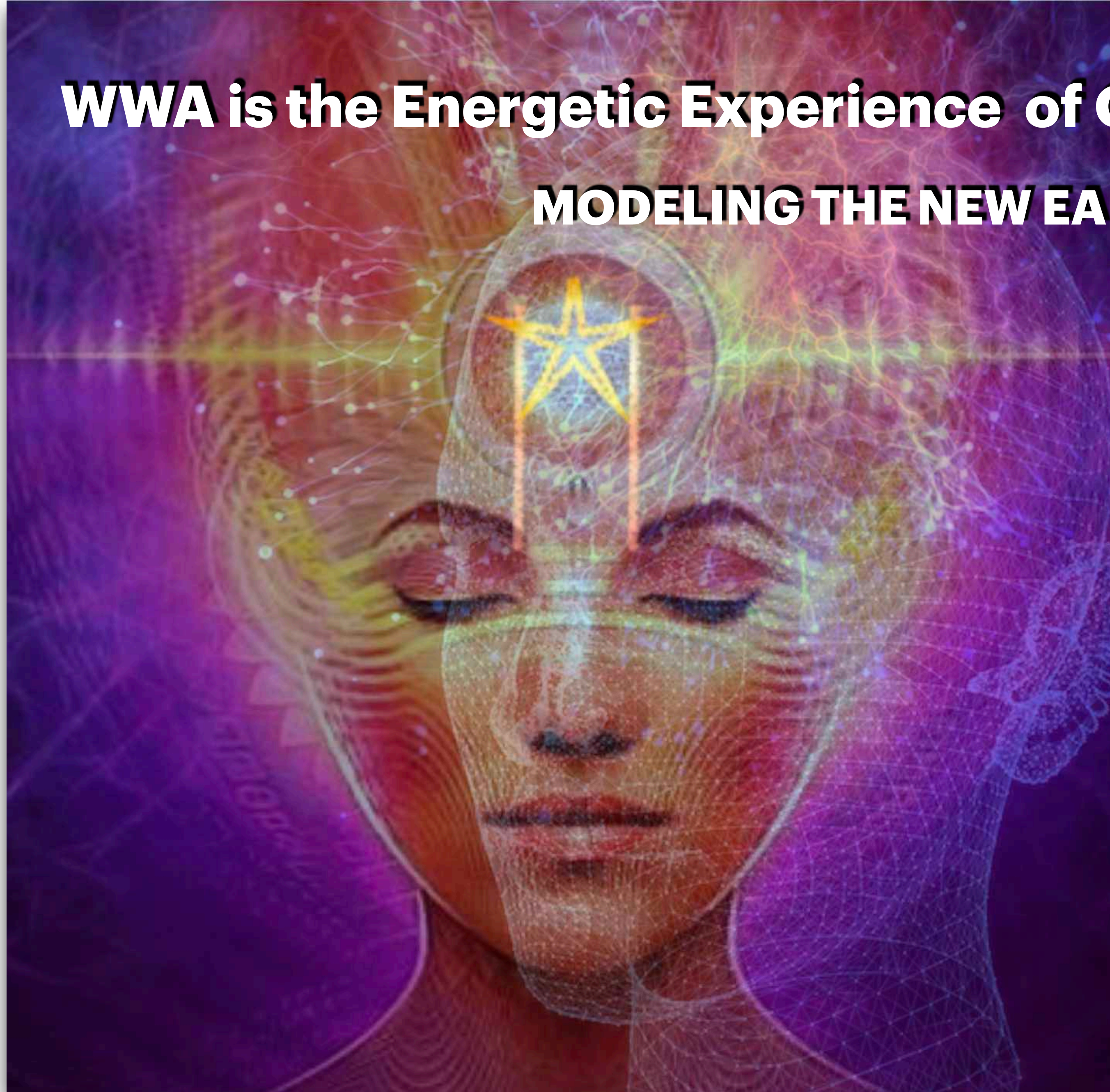
The center of the dome will hold the seed of Divine Creation and will expand into a hand painted mural anchoring the equilateral cross of perfect balance and be ringed by four smaller connected domes which serve as stages and sacred markers to each of the four directions.

This project will be ground zero for awakening consciousness on our planet at a time when we must anchor this energy to benefit all.

Learn more about the Dome and how you can become a Sponsor



**WWA is the Energetic Experience of ONENESS BEYOND Ego & Mind.
MODELING THE NEW EARTH...TOGETHER!**



***Spiral Petroglyph ONSITE at TOSA Blue Mountain.
From the Original Cañari Temple of Light.***

Our Story

March 20, 2021 is a moment that will ignite the Unified presence of Perfect Balance

This is the balance that arises from deep within our divine nature and arises with the voice of integrity!
The voice of the Master, as One with form, in harmony with the generous waves of the universe reminding the "ONE" and the "ALL", that
TOGETHER WE ARE BETTER."

WWA Global Summit Overview

Your Day by Day Journey

Thursday, March 18, 2021 Your Arrival Day! **D**

You are welcome to the property after 2pm. Settle in to your new home, explore the land and adapt to the high frequency energy. Your first visit to the water therapy center or time in the caves? Enjoy your first group dinner with spiritual family!

(note: If your flight does not accommodate arriving into Guayaquil airport by 8am on the 18th please consider arriving on the 17th and spending the evening at the Holiday Inn airport hotel. Our group transfer to the event is included in your package and originates there! If you are unable to be on the group transport you will be billed for private transportation to TBM.)

Friday, March 19, 2021 The Illumination begins! **B, L, D, S**

Wake up in the Sacred Andean Valley and embrace the singing birds, *(TBM has over 10 varieties of hummingbirds, Condors and so many more)*, plus abundant flowers and vast views. This morning after breakfast is a special time!

Onsite guests will have the RARE opportunity to be at the Temple of Light as the Cañari begin the continuous ceremony starting at NOON on Friday! Only residential guests will have this access and many other surprises.

The Worldwide ceremonies begin at 6pm and together we will CELEBRATE!

All vegetarian/vegan meals are included as noted above. B/Breakfast L/Lunch D/Dinner S/Snacks

All meals have gluten free options and special dietary needs can be accommodated...please let us know!

Community Snacks are included along with coffee/tea throughout the day and unlimited Crystalline and Pure TRULY AMAZING drinking water! Bring your bottle!



Master Lady Kira Raa at the entrance of the Temple of Light guiding guests into ceremony.

Your Day by Day Journey

Saturday March 20, 2021: B, L, D, S

EQUINOX MAGIC..the exact time of the Equinox is at 4:37am and as a residential guest you have the option to join the ongoing ceremony at the Temple of light!

Today the Summit is expanded and the energy is MOVING and BUILDING! Your heart is soaring and the inspiration limitless!

Sunday March 21, 2021: B, L, D, S

A perfect day of culmination! Messages from the Mountain, claiming the AWAKENING and culminating celebrations ignite the campus and our collective hearts! Together we are Better!

Monday, Tuesday, Wednesday, March 22, 23, 24, 2021 B, L, D, S

Where is your heart calling to you? These three days are filled with special workshop events from featured speakers and your retreat is a passport to any and all of them! Let your soul guide and flow through each day as the energy of the weekend integrates and uplifts!

Thursday March 25, 2021 Breakfast for departing guests, full services for all others.

Extensions begin or the moment has arrived for your divine Being to carry this blessing home and embrace the greater journey!

**The TBM Temescal and Four Directions Ceremonial site!
Community, Ceremony, CELEBRATION!**



All vegetarian/vegan meals are included as noted above. B/Breakfast L/Lunch D/Dinner S/Snacks

All meals have gluten free options and special dietary needs can be accommodated...please let us know!

Community Snacks are included along with coffee/tea throughout the day and unlimited Crystalline and Pure TRULY AMAZING drinking water! Bring your bottle!



Together we are Better!

Residential Summit Package Details

Supported by the stunning beauty and high vibrational frequencies at TOSA Blue Mountain Sanctuary in harmony with Sacred ceremony, spiritual support and divine inspiration, prepare to soar as you break free from any-thing that would challenge your mastery!



Two Onsite Meditation Caves
offering DIRECT connection
with the Andes Mountains!



Water Therapy Center
Pool-Jacuzzi-Sauna-Exercise Center



Extend your stay and discover the blessing of
100%PURE ORGANIC San Pedro!



Onsite WWA Attendee packages

Please carefully read this content.

ALL ONSITE PACKAGES have IDENTICAL benefits.

Shakti Exchange pricing is determined by your room selection!

Your ARRIVAL GROUP transportation IS INCLUDED as part of your package.

Please arrive for the group transport departing for TBM from the Holiday Inn at the Guayaquil airport at 11am on March 18, 2021. Many guests arrive a day early and spend the evening at the Holiday Inn. *Departure transportation will be billed separately based upon date of departure and others traveling with you.*

QUESTIONS? PLEASE ASK!

A word about your accommodation options!

TOSA Blue Mountain has multiple lodging options as noted on the next page.
Your room selection determines your total Shakti Exchange as noted on page 15.

The offsite hotel is approx. 25 minutes away and your DAILY ROUNDTRIP transportation, both to and from TBM, IS INCLUDED. Breakfast will be at the hotel and all other meals/snacks at TBM.

The owner of this hotel is a Medical Doctor and we have used this facility many times.

The offsite hotel also has pool, sauna and jacuzzi and onsite restaurant.



What is included in my package? March 18-24, 2021

Main event March 19-21, 2021

Post-event Workshops March 22, 23 and 24, 2021

Residential Attendance will be filled on a first come, first confirmed basis.

Here are all your benefits:

- * 7Days/6 nights ALL-inclusive accommodations. Occupancy based upon package selected.
- * ARRIVAL Group transportation from the Guayaquil Airport. Pick up is arranged for 11am, March 18. *(You can opt to arrive into the Cuenca airport which is only 45 mins from TBM, however this will incur a transportation charge of \$25)*
- * All Meals as shown on the Day by Day journey overview on pages 8 &9 of this packet.
- * Full and unlimited access to ALL TBM amenities..see next page
- * Special pre-event access to the Cañari and the Temple of Light at TBM.
- * Admission to ALL events at the WWAGlobal Summit. Including post event workshops
- * Special discounts on any additional services at TBM and other surprises!

Onsite Guests can choose between staying at TBM or at the local event hotel.

Hotel guests will have breakfast at the hotel and other meals at TBM.

Daily round trip transportation for hotel guests is included.

**One of several large pyramids waiting for you!
This one is located in the "7th Dimension", on the
trail that leads to the Meditation Caves.**

All TBM pyramids are built using golden ratio proportions.

***TOSA Blue Mountain is an all-inclusive destination location!
Whether you are coming to study the Yoga of Self Ascension or
to call forward your best life, TBM has it all!***

- All-Inclusive Vegetarian/Vegan Cuisine and Coffee Bar
- Water Therapy Center
- State of the Art Exercise facility
- Groomed Hiking Trails with View areas and benches
- Two Meditation Caves
- Onsite ORIGINAL Indigenous Ceremonial Sites and 5000+ yr old Petroglyphs
- Sacred Medicine Visioning Journeys, harvested on-site!
- Two high aspect ratio Pyramids
- Temescal Stone Sauna (sweat lodge) and Four Directions Fire Pit
- Avesa Healing Chamber and extensive list of services including Massage & Spa
- Violet Ray Shiva Temple & Satsang Meditation Center
- International art collection of Sri & Kira...ask for a tour!
- Onsite "Old Paute" Archeological Site
- Authentic Mayan Ceremonial Site
- Fully Equipped Yoga Center & Dance Studio

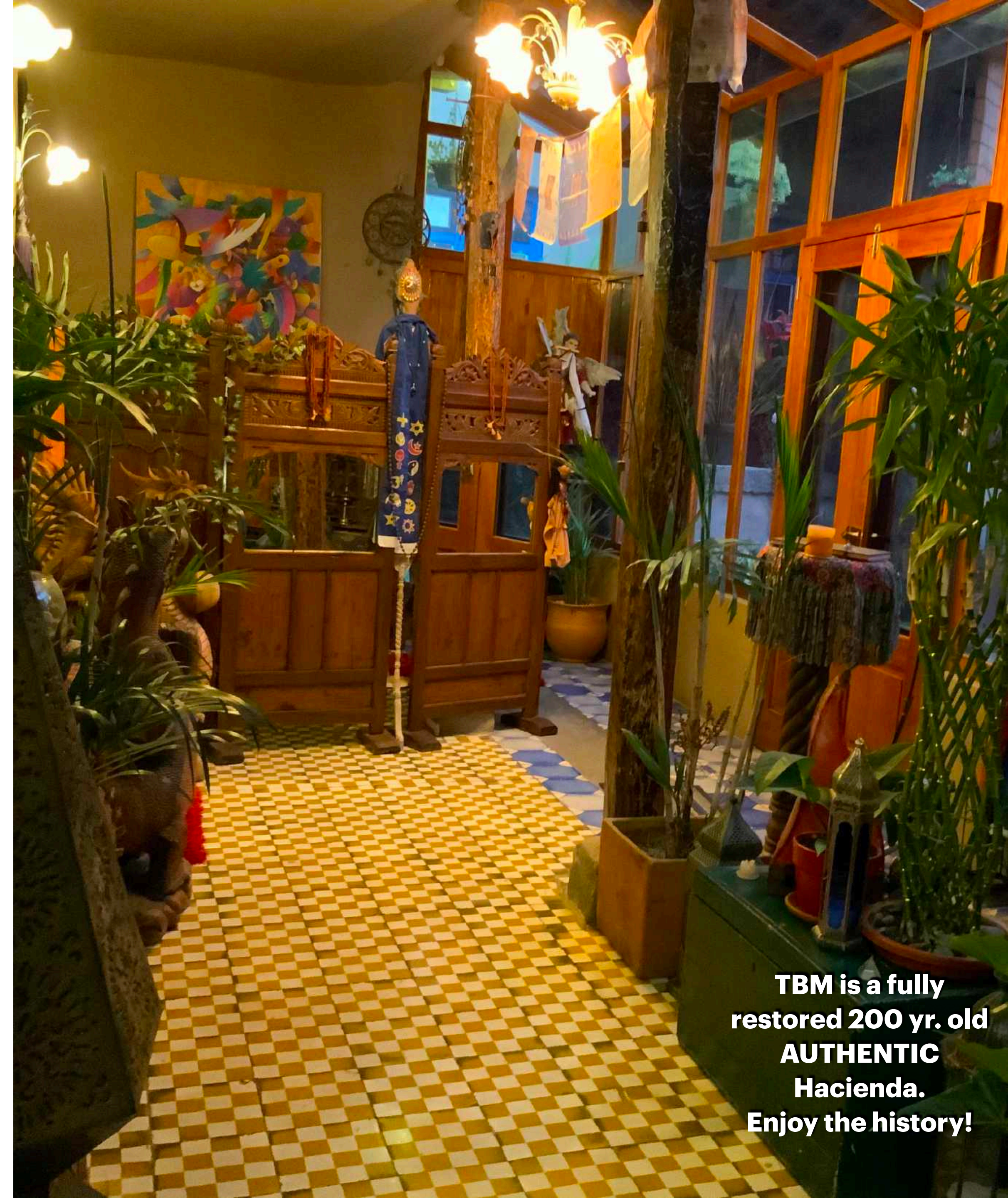
TOSA Blue Mountain Room options

The following pages detail your accommodation options at TBM and offsite Hotel.

On page 22 simply select the package based upon your room selection to determine your Shakti Exchange.

ALL Casitas Include the following

- Daily vegetarian/vegan meals and beverages
- Unlimited crystal clear purified drinking water
- Modern Bathrooms with Hot water
- Complimentary in-room Organic Coffee/Tea bar
- Complimentary WiFi internet
- Yoga mats
- Hiking sticks
- Stunning patios with Extraordinary Views
- Heaters for occasional chilly nights in the Andes
- Our signature "TOSA Hug" poncho
- TOSA Tunics to enjoy a more relaxed experience
- Spacious sitting areas
- [Access to all Amenities!](#)



**TBM is a fully
restored 200 yr. old
AUTHENTIC
Hacienda.
Enjoy the history!**

Onsite Guests have Direct access to ALL TBM Amenities and direct interaction with our Cañari friends.

What if EVERYTHING that is happening ...right now...was to entice your consciousness to see...even more?



Compadres Suites



Built to honor the Compadres Mountains that majestically stand as guardians of TOSA Blue Mountain these two identical suites are our finest accommodations. Begin with your Queen sized Tempur-foam bed with Egyptian Cotton Sheets and upgraded bathroom amenities.

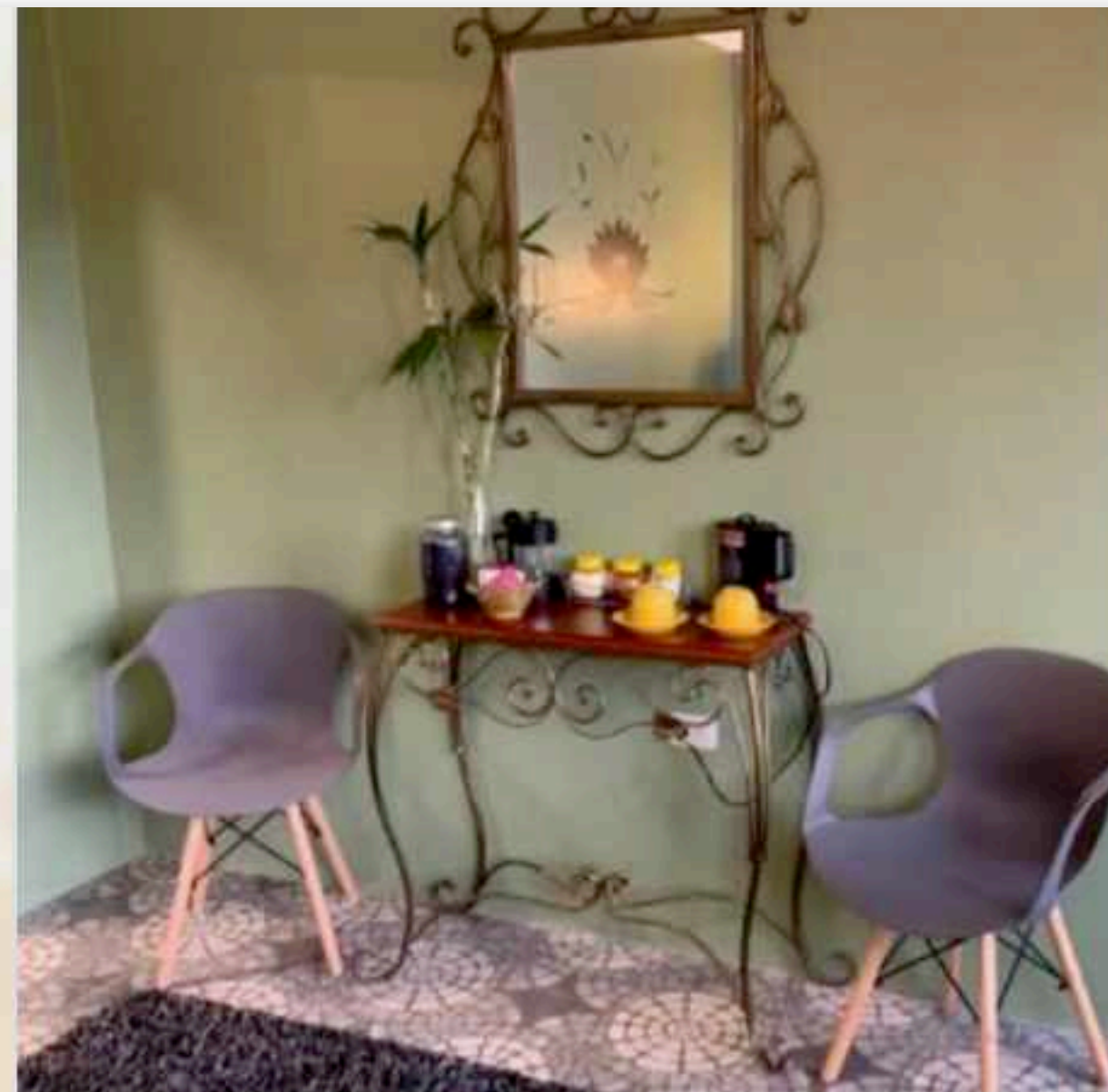
Your private bathroom includes a lovely tub and your perfectly appointed bed invites gentle cozy mornings with a cup of fresh brewed organic coffee with views of the mountains!

Each suite has a private patio for sunset views that you will remember forever. Perhaps a glass of wine to go with that?



One or Two people in a Queen Bed

With views of the Compadres Mountains



Organic Coffee & Tea Bar



Outdoor Patio

Merlins Cottage



This original structure was nearly destroyed when Sri & Kira first discovered it. Incorporating the original stone foundation, windows, adobe walls and wood rafters, today this cottage is a popular space for couples and families looking to experience the authenticity of this sacred land! Upon entering, the lovely living area greets you with the magic of Merlin, the namesake of the cottage. Cozy chairs, coffee bar and table/chairs for enjoying the views are all waiting along with a fireplace heater to add to the charm.

Open the door to a breathtaking view and enjoy the large patio as you sink into the magic of you! Equipped with top quality twin beds and one full size, there is room for up to four people. The all new fully appointed modern bathroom is an addition to the original structure constructed to compliment the history!

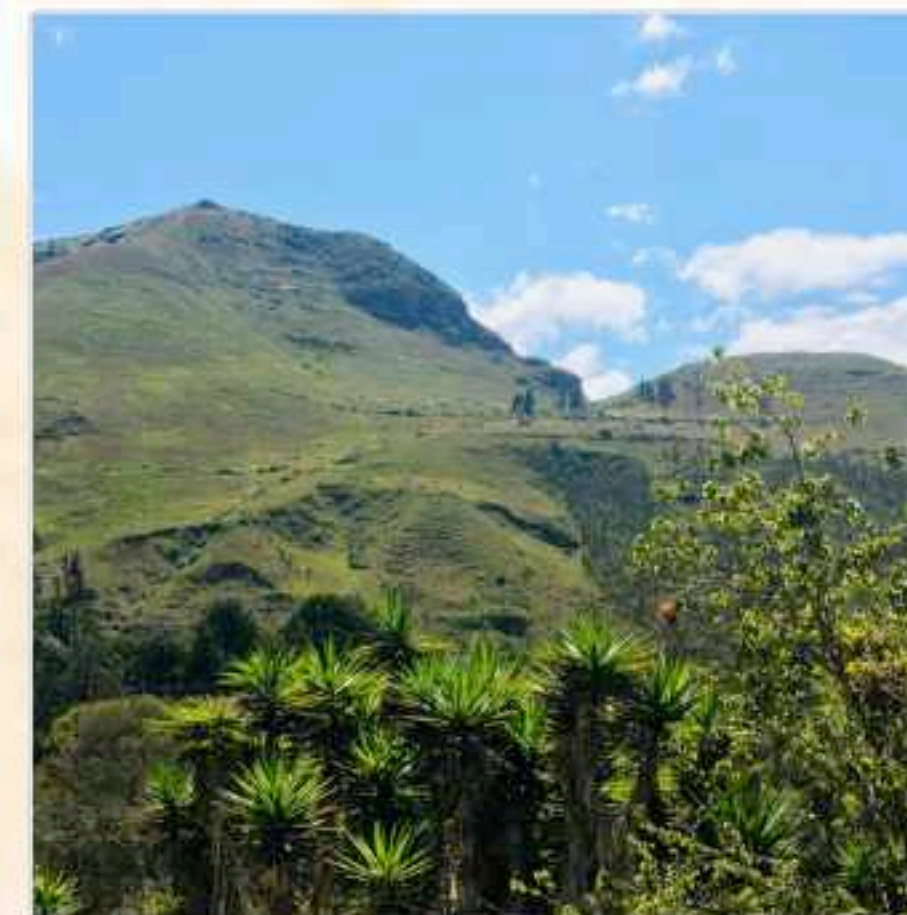
Please note!

For this event Merlin's Cottage will be accommodating four persons. The PERFECT space...your private home for a small group or family!



Cozy Living Room

Organic Coffee & Tea Bar, Refrigerator, Views & More!

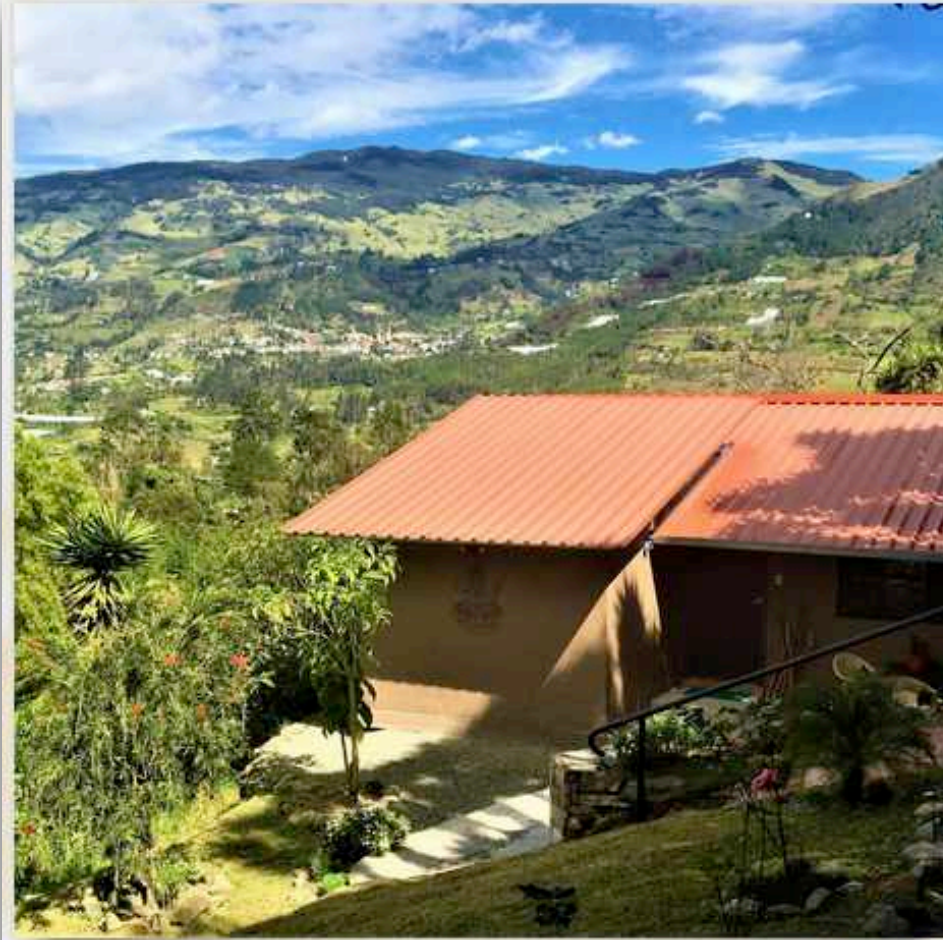


views of the Compadres Mountains



Perfect for Families!

Ganesha Community House



Views of the Inter Andean Valley



Gold Room



Living Room & Coffee/Tea Bar

Imagine an elegant hostel for those who enjoy meeting others without compromising anything!

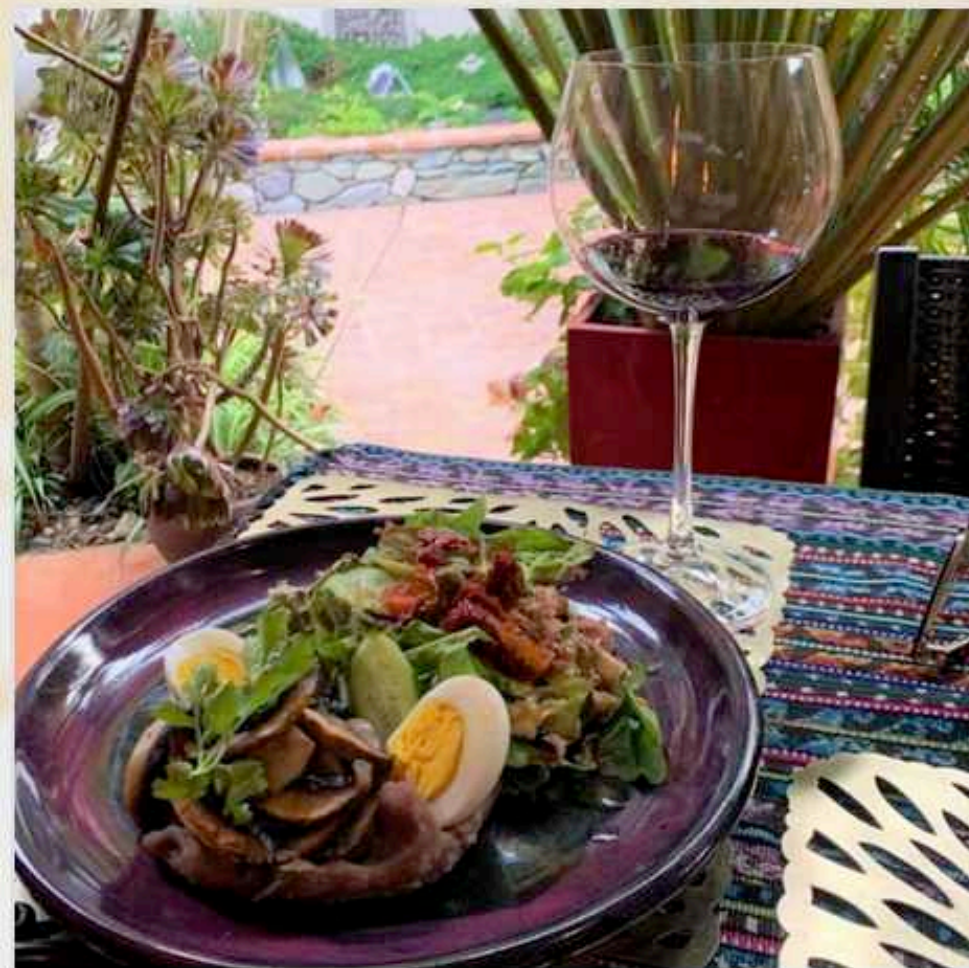
Ganesha community house was custom designed by Sri Ram Kaa with a keen sense of use of space to comfortably accommodate up to eight persons without feeling cramped!

Three lovely bedrooms are each appointed with twin beds with high quality mattresses and a large living room with generous seating.

The outside patio offers additional space to relax, connect and watch the sunrise or sunset with presence!

A favorite gathering space for many resident guests, this space reserves by the bed!

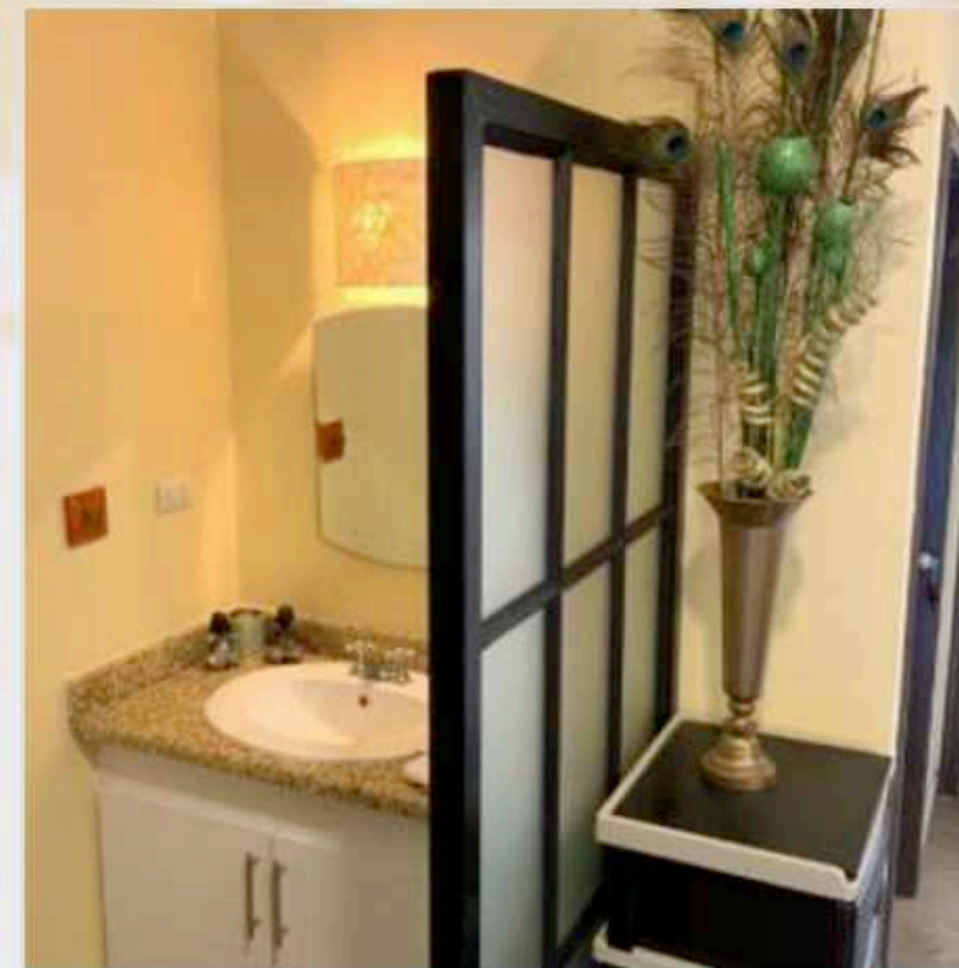
Note! Two of the rooms do have bunk beds and you can request a lower bunk if available. To facilitate a greater sense of spaciousness this casita has two separate showers, two separate sinks and two separate toilet areas so that your comfort is always a priority while you enjoy the gift of connecting with other visitors.



3 meals, snacks & beverages included



Amethyst Room



Two Modern Bathrooms & Showers

The Garden Cottage

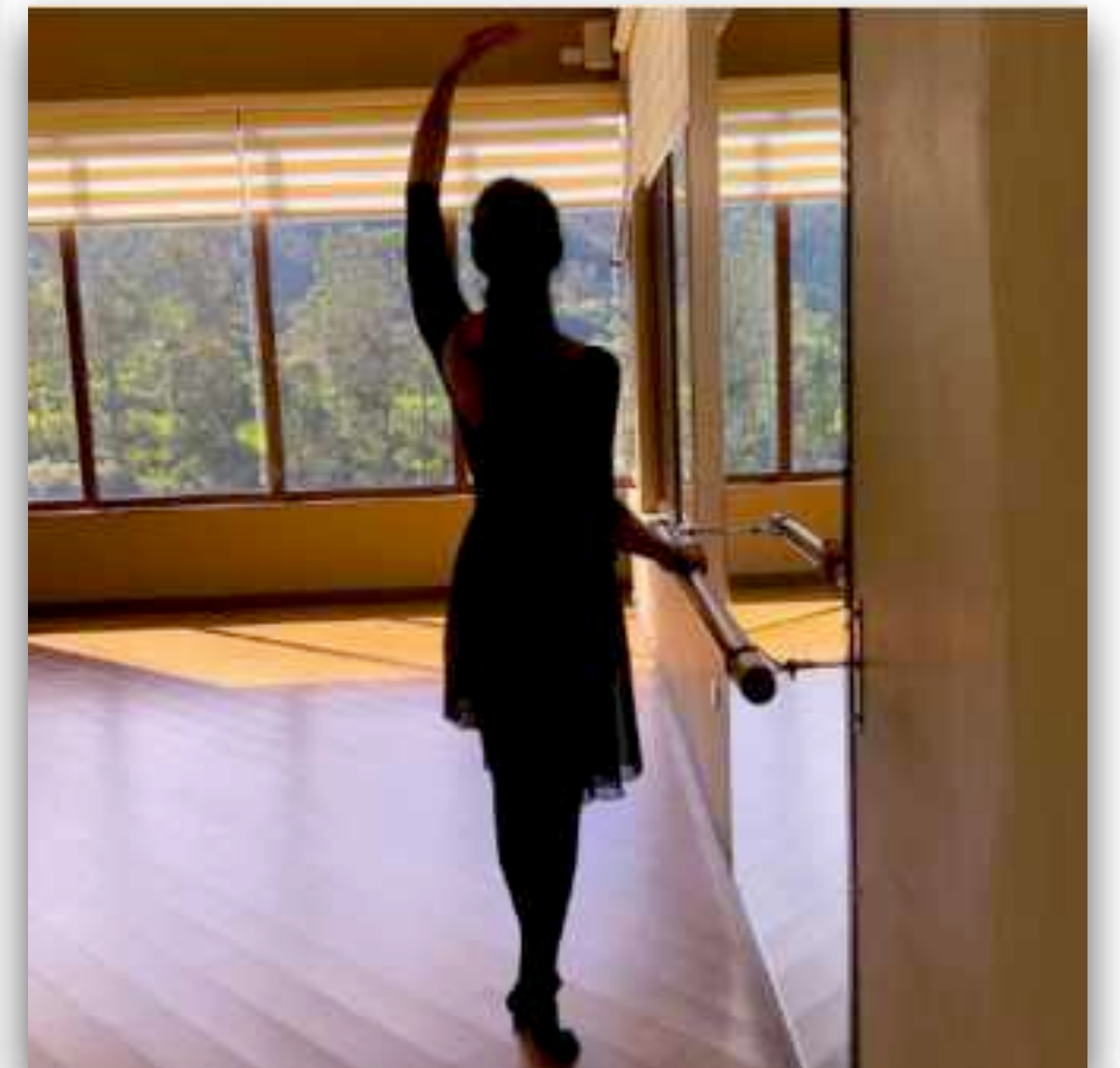
This lovely cottage is nestled along the trail to the Old Paute Ceremonial site.

The views from the curved windows encompass the entire valley!

Steps away from The Yoga/Dance Studio and the Main entry to the Dining Areas the vantage point here is energetically potent!

Your cozy cottage paradise has two twin beds and bathroom with private shower.

Perfect for two people traveling together!

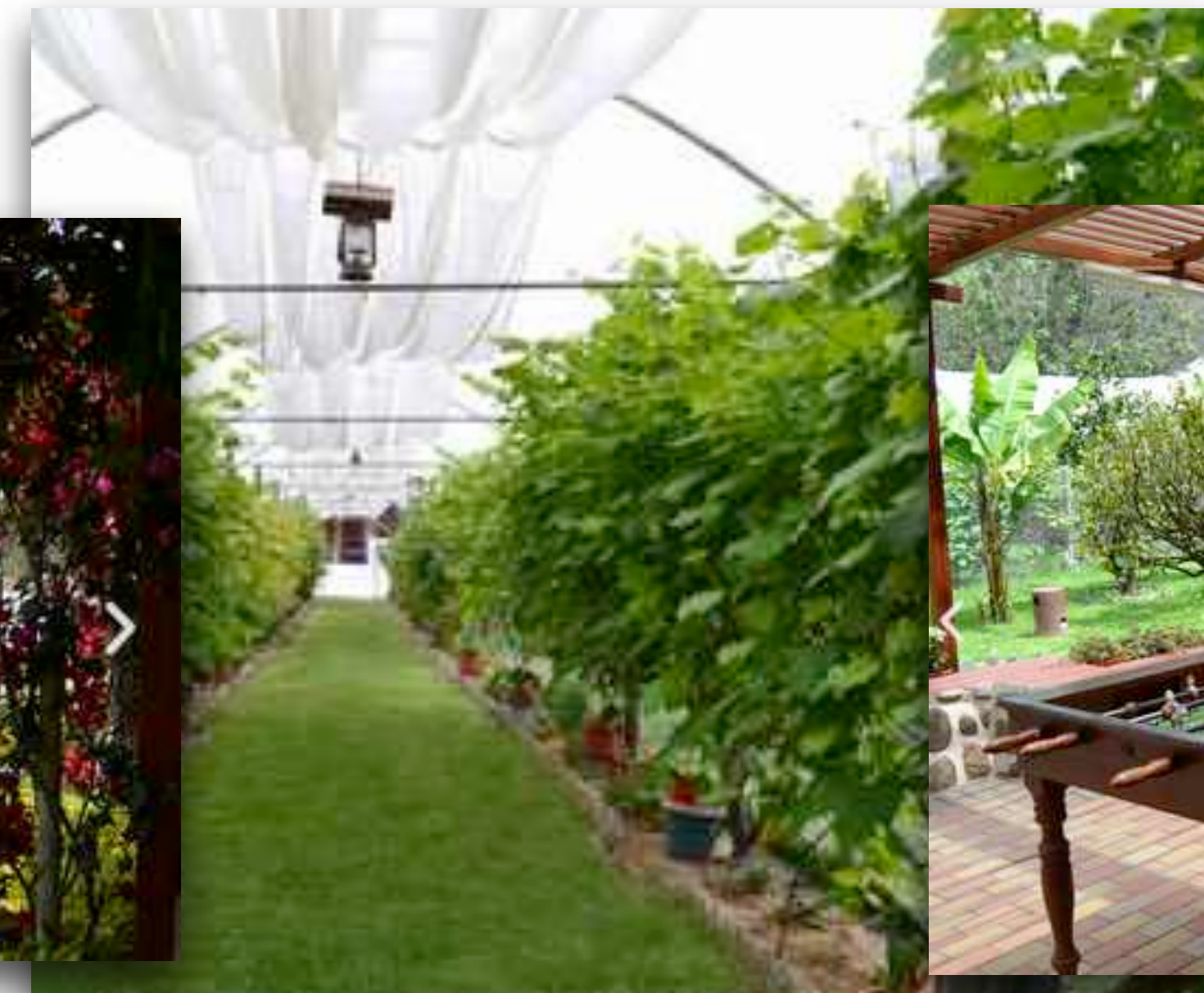


Offsite Hotel

This truly lovely hotel has a garden environment and is owned by a personal friend of Sri & Kira. A medical doctor herself, this hotel is filled with modern amenities and you may select from a private room/single occupancy, or double room.

Approx. 25 minutes from TBM, your daily Round-trip transportation IS INCLUDED in your package. This is with our group transport with a fixed departure time each day.

Breakfast will be served at the hotel and you will receive all other meals and snacks at TBM. Enjoy the added benefits offered here and for some... a moment to fully decompress from the vast activities that will be happening onsite.



SHAKTI EXCHANGE REFUND GUIDELINES:

**YOUR \$250 RESERVATION
DEPOSIT IS NON-
REFUNDABLE
FOR ANY REASON.**

CANCELLATION FOR ANY
REASON PRIOR TO
JANUARY 30, 2021, **AND IF
YOUR SPOT IS ALSO
FILLED BY ANOTHER
PERSON, YOU WILL
RECEIVE BACK 50% OF
YOUR PAYMENTS (OTHER
THAN YOUR RESERVATION
DEPOSIT OF \$250), UPON
CONFIRMATION &
PAYMENT OF THE PERSON
FILLING YOUR SLOT.**

**AFTER JANUARY 30, 2021
ALL PAYMENTS ARE
NON-REFUNDABLE.**

EXTENSION PAYMENTS:

**PAYMENTS FOR ANY
AFTER PROGRAM
EXTENSIONS ARE
REFUNDABLE BASED
UPON THE GUIDELINES
ABOVE.**

**EXTENSIONS REQUIRE A
\$100 NON-REFUNDABLE
DEPOSIT TO HOLD YOUR
RESERVATION.**

Shakti Exchange Details

Your All-inclusive Program Shakti Exchange includes everything in this PDF and is based upon your room selection.

We will do our best to accommodate you and encourage you to be open to a second choice.

NON-REFUNDABLE Deposit of \$250 reserves your space! Once we are full a wait list will be created.

NOTE! Want to save? Prior to Pay in full before December 31, 2020 and save 10%!!

Also available at REDUCED RATES —Stay for BOTH options or select one.

Journey Extensions are 100% ALL-Inclusive of room and meals. A \$100 Non-Refundable deposit holds your reservation.

PLEASE NOTE...Limited Sessions Available! We will confirm as deposits are received.

Three day/two Night San Pedro Journey with Summit: \$299

Three day/two Night Crystalline Atlantean Healing Chamber/ Private sessions with Sri & Kira: \$555

Payment plans are available and can be customized. [Please ask by clicking here.](#)

Six simple Steps to participate on the journey:

1. Select the room that suits your needs on the next page. Your Shakti Exchange is listed with the room choices.
2. Your space will be confirmed upon receipt of your full deposit of \$250. This is non-refundable and confirms your room selected.
3. Please indicate if you are including one or both of the extensions and let us know if you would like a payment plan.
4. You will need valid passport to travel to Ecuador and normally a tourist visa is issued upon arrival without the need for application prior to arriving. However please check Visa requirements for your country of origin. Your passport must have at least six months remaining to enter Ecuador. Please check your dates.
5. We encourage you to purchase your airfare as soon as possible. There are AMAZINGLY affordable round trip tickets to and from Guayaquil, Ecuador! (GYE airport code) We are close to Cuenca and you are welcome to arrive into that airport, however it usually more expensive. However from Cuenca, you are only 45 minutes to TOSA Blue Mountain Sanctuary. REMEMBER you MUST ARRIVE TO the Guayaquil airport to take advantage of the group arrival included with your package pricing.
6. Smile and KNOW that YOU ARE making a difference!!!

**SHAKTI EXCHANGE
REFUND GUIDELINES:**

**YOUR \$250 RESERVATION
DEPOSIT IS NON-
REFUNDABLE
FOR ANY REASON.**

**CANCELLATION FOR ANY
REASON PRIOR TO
JANUARY 30, 2021, AND IF
YOUR SPOT IS ALSO
FILLED BY ANOTHER
PERSON, YOU WILL
RECEIVE BACK 50% OF
YOUR PAYMENTS (OTHER
THAN YOUR RESERVATION
DEPOSIT OF \$250), UPON
CONFIRMATION &
PAYMENT OF THE PERSON
FILLING YOUR SLOT.**

**AFTER JANUARY 30, 2021
ALL PAYMENTS ARE
NON-REFUNDABLE.**

EXTENSION PAYMENTS:

**PAYMENTS FOR ANY
AFTER PROGRAM
EXTENSIONS ARE
REFUNDABLE BASED
UPON THE GUIDELINES
ABOVE.**

**EXTENSIONS REQUIRE A
\$100 NON-REFUNDABLE
DEPOSIT TO HOLD YOUR
RESERVATION.**

Shakti Exchange Summit packages

Compete payment of your Shakti Exchange by December 31, 2020 and receive 10% off the listed Shakti Exchange!

Compadres Suites per person: \$1333 (one suite available on first come first confirmed basis)

Note: You may reserve this as a private onsite accommodation for one person

Merlins Cottage per person: \$ 918

Note: Up to four people can comfortably be accommodated in this cottage

Ganesha Community house per person: \$711

You will be assigned a bed or may request a room/bed in advance.

Garden Cottage per person: \$833

This cottage is two twin beds in separate spaces with a private bathroom
You can select as a single and we will match you with a roommate.

Offsite Hotel:

Includes daily round trip transportation via group transport.

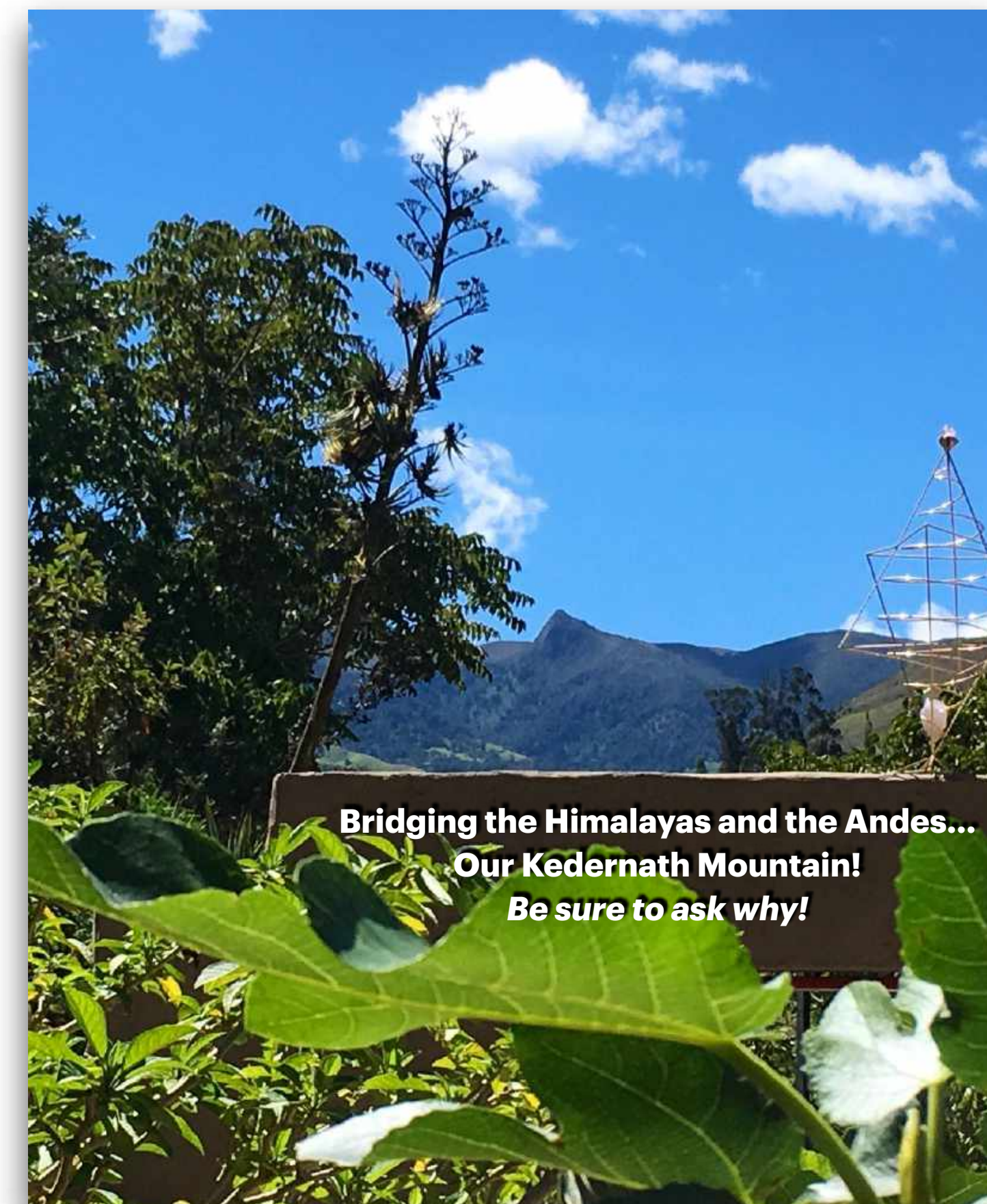
Breakfast at hotel, all other meals/snacks at TBM

Single room: \$888

Double Room: \$707

Triple room: \$655

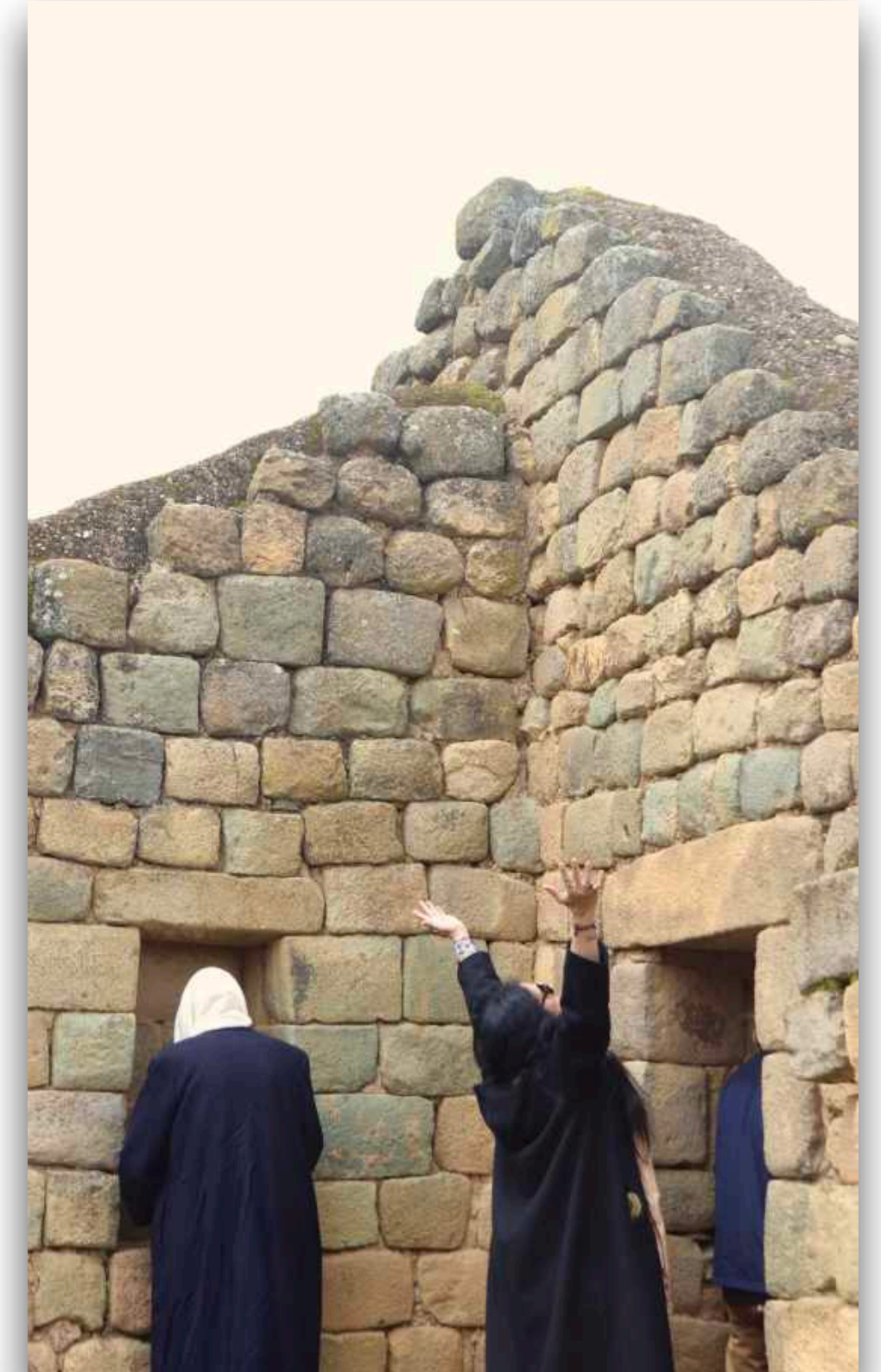
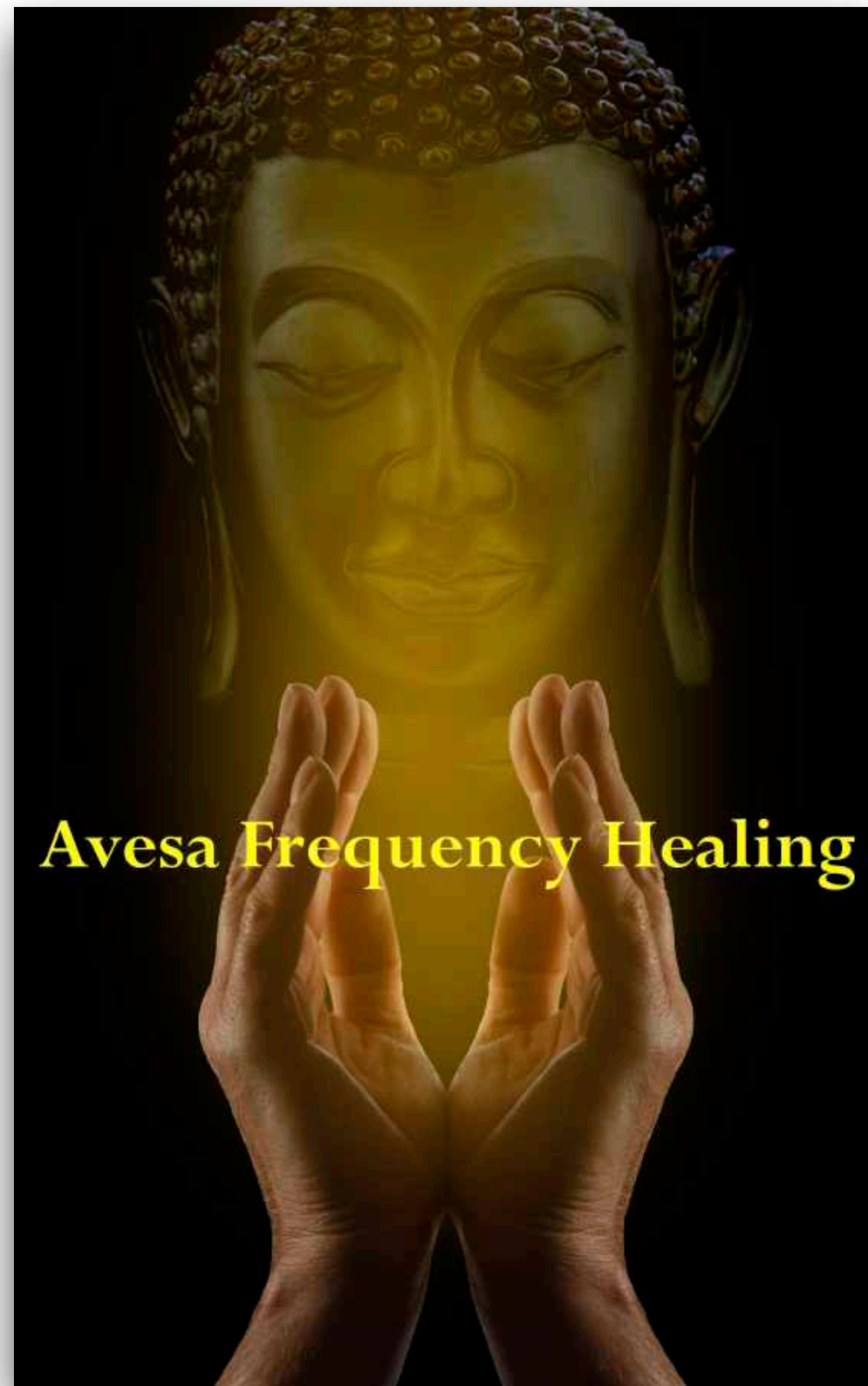
We will assist you with room mate selections.



Post Event Experiences at TBM

THE SUMMIT HAS CULMINATED AND THE NEXT CHAPTER HAS OPENED! WHAT ARE YOU READY TO DO!

STAY A FEW EXTRA DAYS AND EXPERIENCE THE DEPTH AND PRESENCE OF A CRYSTALLINE ATLANTEAN HEALING CHAMBER,
OR PRIVATE SESSIONS WITH SRI & KIRA. MAYBE A TOUR OF CHOBSHI OR INGAPIRCA! INDULGE IN SPA SERVICES,
EPOCH LASER TREATMENTS AND/OR BEGIN YOUR REVERSE AGING PROCESS WITH IV SESSIONS FROM DR. LORENA!
STAY ON CAMPUS FOR UP TO A FULL WEEK TO "DO IT ALL" OR ASK ABOUT OUR LONG TERM RESIDENTIAL PROGRAMS!



Interested in staying on At TOSA Blue Mountain?
Write us with your questions and we are happy to customize a package for you! info@WWAGlobal.com

© 2020 All right Reserved, TOSA Center for Enlightened Living